



EYEBATH

Twin nozzled eyebath is manufactured in stainless steel and GRP, and comes on as soon as the lid is lifted.



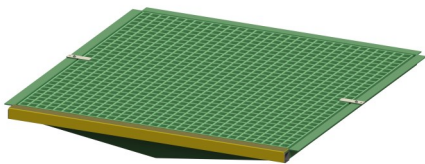
EYEBATH FOOT TREADLE

Stainless Steel foot provides a hands free method of activating the eyebath.



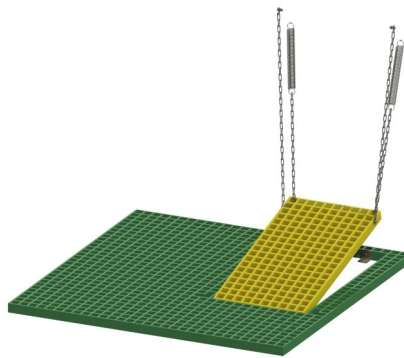
FLEXIBLE EYEWASH

Hand held eye, face and body spray on a flexible hose activated via a pull rod.



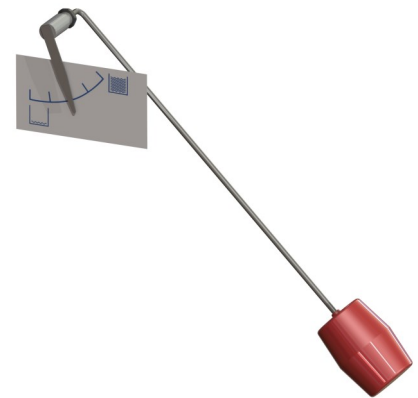
DRAIN SUMP

Waste water collection sump with a 2" BSP or NPT outlet. GRP grated floor. Available in green, yellow or white.



SHOWER ACTIVATION PLATFORM

GRP foot panel shower control provides a hands free method of activating the tank shower.



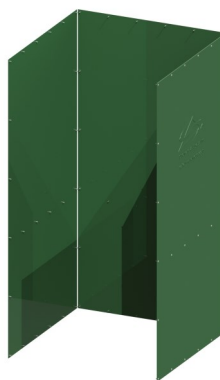
VISUAL WATER LEVEL INDICATOR

Visual indicator fitted on the front of the tank to enable the operator to check the water level inside the tank.



VISUAL WATER TEMPERATURE GAUGE

6" Temperature Gauge with dual scale 0-60°C / 30 -140°F.



SIDE & REAR PANELLING

Panelling fitted the tank shower frame to help protect the user against the elements during operation and over spray. Available in green, yellow & white. Insulated panels also available.



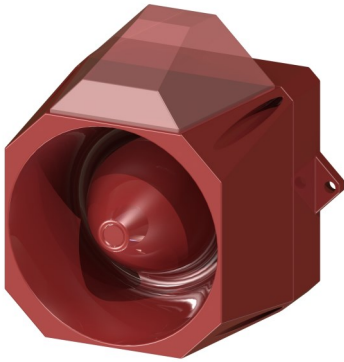
STRIP CURTAINS

Flexible PVC Strip Screens fitted to the entrance of the Tank Shower to help prevent over-spray during operation.



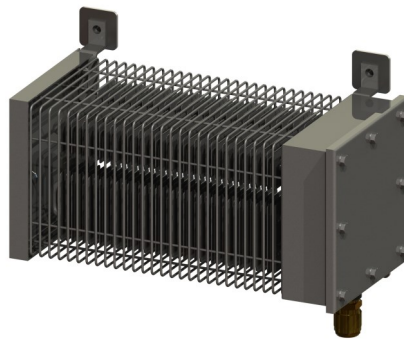
T: +44(0)1744 889677  
 F: +44(0)1744 885663  
 E: info@safety-showers.com

Showers & Eyebaths Services Ltd Safety House, 23c Rainford Industrial Estate, St Helens, Merseyside, WA11 8LY



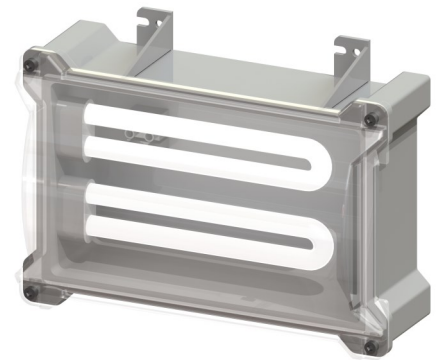
**ALARM & SIREN**

Audible/visual alarm activated when the shower and/or eyebath is being operated. A micro switch is required with this option. Available Non Hazardous, ATEX, CSA & GOST.



**AIR HEATER & STAT**

Maintains an acceptable temperature inside cubicle area. Set at 20°C. Available Non Hazardous, ATEX, CSA & GOST.



**LAMP**

Fitted internally or externally to illuminate the operating area and draws attention to the safety shower. Available Non Hazardous, ATEX, CSA & GOST.



**LOW WATER LEVEL ALARM**

Low level float switch with separate junction box provides remote alarm when water level gets low. Available Non Hazardous, ATEX or GOST.



**REMOTE ALARM**

Micro switch fitted on operating valve (shower/eyebath) to activate remote alarms (or local if fitted).



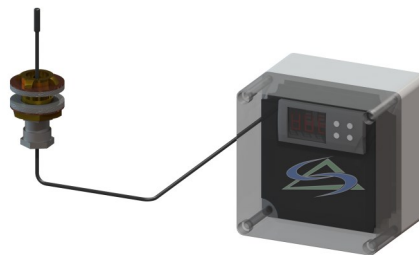
**HCLENZ KIT**

Provides protection against infestations of pathogenic bacteria such as legionella.



**WATER HEATER & STAT**

Available as trace heated heater pads or immersion heater to warm water to 18°C. 250w heater pads fitted to bottom of tank with digital stat. Available Non Hazardous, ATEX & CSA.



**WATER TEMPERATURE ALARM**

Low/high temperature alarm with digital display. Low temperature alarm set at 10°C. High temperature alarm set at 23°C.



**WATER CHILLER**

3Kw Water Chiller (Set to 20°C). Water level switch built within chiller to ensure system turns off if the tank becomes empty.



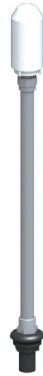
T: +44(0)1744 889677  
 F: +44(0)1744 885663  
 E: info@safety-showers.com

Showers & Eyebaths Services Ltd Safety House, 23c Rainford Industrial Estate, St Helens, Merseyside, WA11 8LY



**SUN CANOPY**

Overhead GRP sun canopy to help reduce solar gain. Canopy features a built in inspection hatch for maintenance purposes.



**AUTO SIPHON DUMP VALVE**

Automatically replenish a proportion of the water in the tank on a regular basis to ensure the water in the tank is kept clean at all times.



**INSPECTION LADDER**

Bespoke stainless steel maintenance ladder for ease of access to inspection hatch. Securely bolted to shower frame and floor.



**MANUAL DRAIN VALVE**

Manually operated drain valve to empty tank.



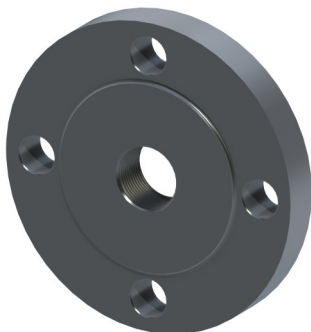
**SPRING LOADED DOORS**

Spring-loaded self-closing doors. Available in green, yellow & white.



**DRY AREA / CHANGING ROOM**

Positioned in front of shower entrance designed for the privacy of the user after operation of shower.



**FLANGED INLET**

Various sizes available to suit site requirements and standards.



T: +44(0)1744 889677  
 F: +44(0)1744 885663  
 E: info@safety-showers.com

Showers & Eyebaths Services Ltd Safety House, 23c Rainford Industrial Estate, St Helens, Merseyside, WA11 8LY